

Tactical Analytics Anywhere Appliance (T-AAA)

Delivering Tanzu and the Dell Technologies
Analytics Anywhere Federated Learning
Enterprise AI Platform to the edge

Overview section

As the demand for artificial intelligence (AI), machine learning (ML) and automation continues to grow, businesses and government agencies need a platform designed to bring real-time analytics to their edge environments. Tracewell Systems Tactical Analytics Anywhere Appliance (T-AAA) is the first and only platform designed to deliver Tanzu and the Dell Technologies Analytics Anywhere Federated AI Platform beyond the traditional back office to where it is needed most – the edge.

The Dell Technologies Federated AI Platform makes it possible to rapidly design, deploy, manage and scale AI solutions. The Dell Technologies Federated Platform leverages BOSS AI as the prebuilt AI platform in this appliance. The BOSS AI brings together an ecosystem of lab-validated workloads, no code/low-code analytics capabilities, edge devices, hyperconverged and storage platforms, and industry-specific software in a scalable architecture.

The Tracewell T-AAA underpins the Dell Technologies Platform making it possible to deploy complex and scalable AI architectures in a wide variety of rugged and tactical edge environments. The system is based on the Dell EMC PowerEdge R640 (other Dell EMC PowerEdge servers are available), the company's market leading, enterprise-class rack server technology. Tracewell has transformed the standard PowerEdge R640 into a short-depth server that is electrically identical to a standard, off-the-shelf Dell EMC product, providing a familiar platform and a consistent set of hardware from the traditional data center to the edge.



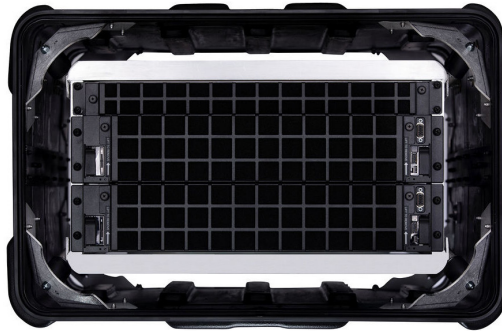
**Tactical Analytics
Anywhere Appliance (T-AAA)**

The Tracewell Systems Tactical Analytics Anywhere Appliance (TAA) features:

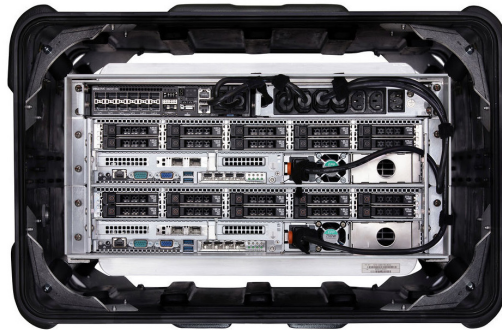
- A compact, short-depth platform built for AI at the edge
- A rugged, MIL-SPC transit case
- (2) Modified Dell EMC R640 servers
- (1) Dell EMC S5212F-ON switch
- (1) PDU

Tactical Analytics Anywhere Appliance (T-AAA)

Front View



Rear View



Configuration Information

Tactical Analytics Anywhere Appliance (T-AAA)

Features (2) Tracewell modified, short-depth Dell EMC PowerEdge R640 servers (electrically identical to standard Dell EMC R640s), (1) S5212F-ON switch and (1) PDU. Adapted for tactical use.

Configuration options are identical to a standard Dell EMC PowerEdge R640. Additional servers and configurations are available, depending on specific program or mission requirements.

Height: 17.1"

Width: 26.0"

Depth: Operation (transit covers removed): 24.0"

Depth: Transport (transit covers installed): 31.4"

ABOUT TRACEWELL SYSTEMS

For more than 40 years Tracewell has enabled the nation's largest military and commercial organizations to deliver powerful and reliable computing solutions in environments where size, weight, power and other constraints present challenges that cannot be met by standard computing systems. Tracewell Systems have been recognized by the top names in the defense and technology sectors for their commitment to Trusted Innovation – a process where the company solves previously impossible, sensitive, mission-critical platform challenges through customer solution design, engineering and manufacturing, all under one roof.

More information: www.tracewell.com

© 2022 Tracewell Systems, Inc. Tracewell Systems, Inc. reserves the right to make changes without notice. All brand or product names may be trademarks or registered trademarks of their respected holders.

March 2022 | Tracewell